

Ceramic Tube experiment using New Energy Vision (NEV)

Dr Harry Oldfield 27.10.13



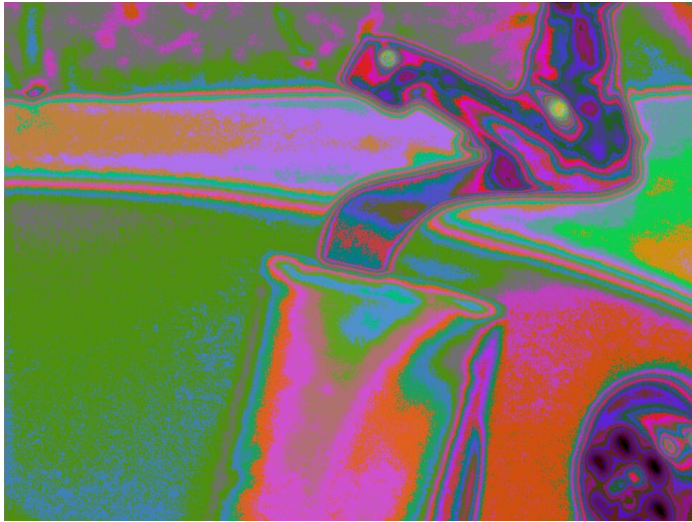
1 Control Ceramic tube, no water passing through



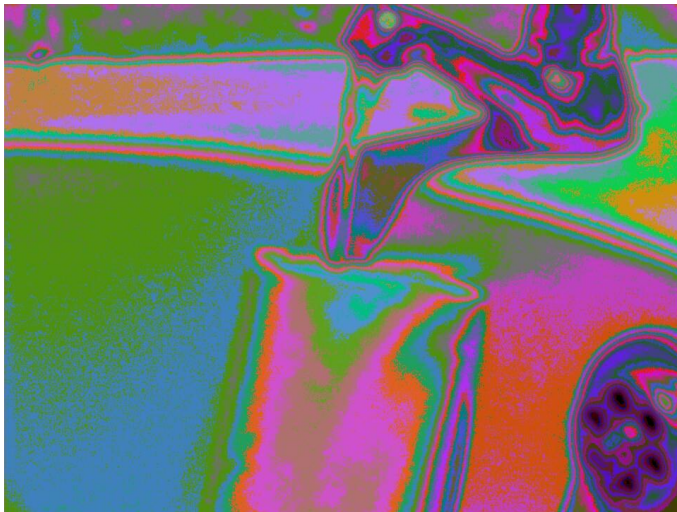
2 Control Ceramic tube with water passing through



3 Control Ceramic tube seen from top view aspect



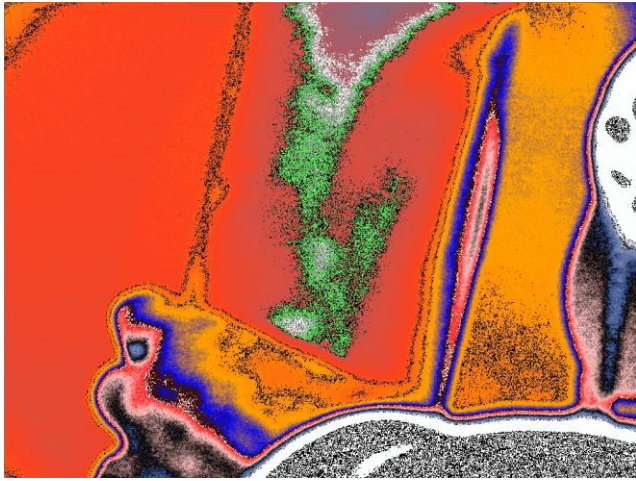
A Control Ceramic tube using New Energy Vision. A vortex is present at the top of the tube.



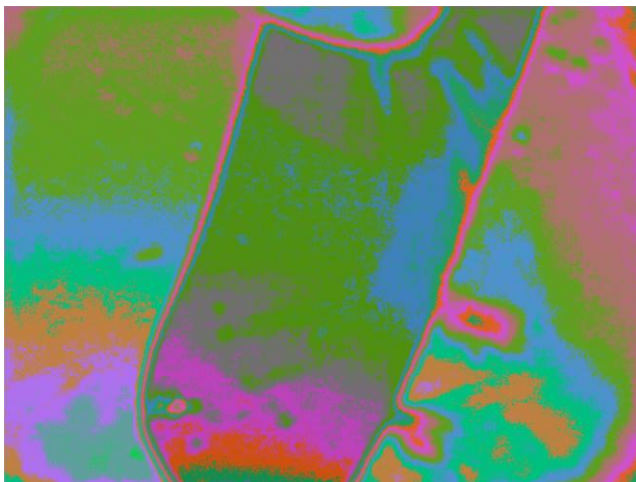
B Ceramic tube with water passing through. The vortex energy becomes more distinct.



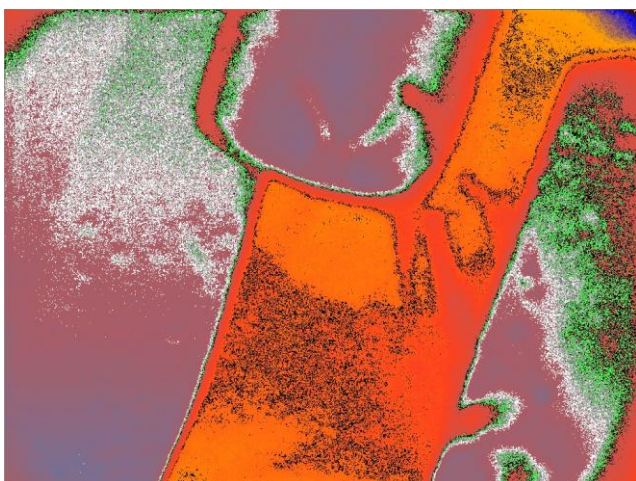
C Ceramic tube energy vortex fully manifested in tornado-shape form after several seconds of water passage.



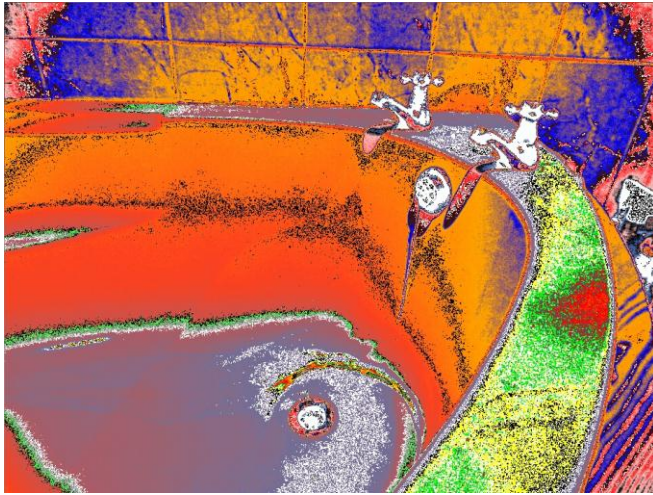
D Ceramic tube using New Energy Vision Blend2 filter showing the spectacular tornado-shape vortex in more detail, with water passing through.



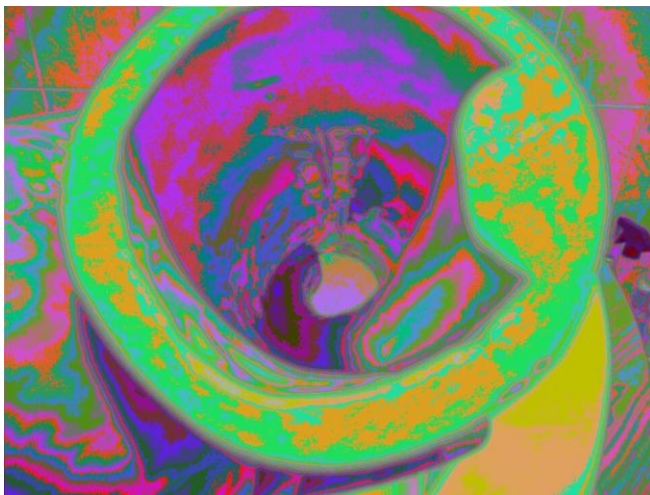
E Ceramic tube showing energy at exit point of tube with water passing through.



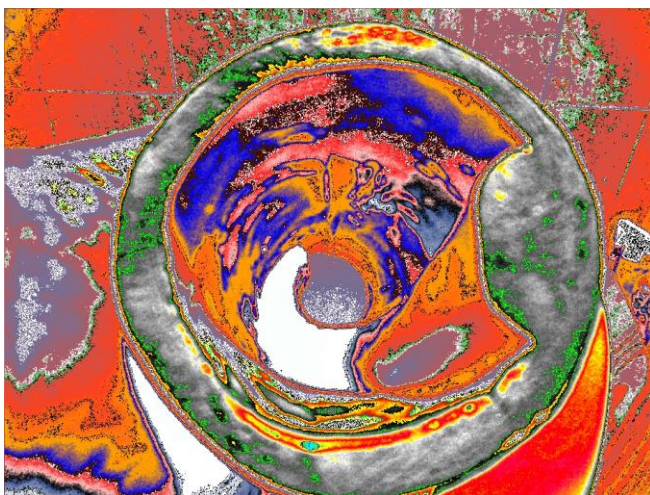
F Ceramic tube exit point using New Energy Vision Blend2 filter. Could not see what had happened to the vortex energy?



G Using New Energy Vision Blend2 filter when the ceramic tube was removed there was no water in the bath but a vortex energy signature can be seen swirling around the exit plug area of the bath!



H Top view of ceramic tube after experiment showing no vortex energy?



I Same aspect top view picture of ceramic tube however using New Energy Vision Blend2 filter residual vortex energy from experiment is still seen.